



sophistication vibe



BRAND
DOMINATION

Sophistication Brand Vibe is a rarefied essence that exudes opulence and timeless class. At its essence, the aura of a sophisticated brand embodies a refined aesthetic that seamlessly blends luxury with intricacy. It is a delicate dance between fanciness and subtlety, where extravagant elements are skillfully woven into product & delivery in the form of elegance.

It is the epitome of refined elegance, a symphony of subtle nuances is the essence of a "sophisticated" brand vibe, a magnetism that captivates and elevates the senses of its audience.

It encompasses a mindset, a way of being that transcends the surface. It is an invitation to cultivate a refined lifestyle, one that embodies grace, poise, and cultural awareness. The sophisticated brand vibe becomes a guide, leading its audience on a journey of self-discovery, encouraging them to embrace the art of living with discernment and appreciation for the extraordinary.

To bask in the presence of a sophisticated brand is to immerse oneself in an experience of timeless allure. The ambiance exudes a quiet confidence, enveloping those who encounter it in an embrace of understated grandeur.

In a world that is often driven by rapid trends and fleeting fads, the sophisticated brand vibe remains a steadfast bastion of elegance and refinement. It stands as a testament to the enduring power of timeless style, inviting us to embrace a world of opulence, to savor the finer moments, and to appreciate the art of living with grace and sophistication.

The Brand Domination Manual Contains

- A. Brand Emotion Elements
- B. Brand Function Elements

How To Use

The framework facilitates the integration of your Brand Vibe into Functional and Emotional elements of brand building for the founding team members. It offers a knowledge repository of the Brand Vibe fundamentals & guidelines to ensure consistency in brand integrity during various growth stages. By using these segments, a fast-track launch becomes possible, enabling the quick conclusion of branding aspects. Furthermore, these segments provide valuable long-term tips and guidance to maintain brand authenticity effectively.

Use this in conjunction with your chosen Brand Archetype Domination Manual to Optimise each factor as well as to create a truly Unique Brand.

Circulate this among your team, relevant stakeholders, marketing and branding departments, or agency, so that everyone becomes adept at understanding your brand's integrity and intended outlook.

1. Brand Emotions

2. Brand Functions

1.1 Mission

2.1 Website

1.2 Vision

2.2 Logo

1.3 Values

2.3 Strategies

1.4 Identity

2.4 Description

1.5 Storytelling

2.5 Colours

1.6 Customer

2.6 Font

1.7 Experience

2.7 Marketing

1.8 Positioning

2.8 USP

1.9 Voice

2.9 Internal Comms.

1.10 Visuals

2.10 External Comms.

Mission Statement

1.1

To _____
(heart of your archetype)

by _____
(the "HOW" - is your product facilitating it)

for _____
(the "WHY" - based off of your brand Vibe)

Incorporate
"Sophistication Brand
Vibe" intention in your
Mission Statement -

The "Whys" of Brands that want to create a Sophistication Brand Vibe -

1. For delivering unparalleled elegance and timeless class.
2. For providing exceptional quality and attention to detail in all aspects of offerings.
3. For curating a collection of exclusive and prestigious products/services.
4. For Skillfully weaving extravagant elements into products and delivery
5. For Cultivating a refined lifestyle for the customers

mission

brandbusinessboundless.com

So your statement would include your "WHY" corresponding your Product/Service In keeping with aforementioned Sentiment

When customers engage with a brand, they have a specific vision in mind for themselves. Identify your offerings that align with that vision and then communicate it with a subtle hint in your vision statement.

Elements that contribute to the
Visions of Customers

**OF A SOPHISTICATED
BRAND VIBE :**

1. Experiencing a sense of refined luxury in every interaction.
2. Being surrounded by exquisite and timeless aesthetics.
3. Feeling empowered and confident in one's personal style.
4. Accessing exclusive and limited-edition products or services.
5. Being part of a sophisticated community that shares similar values and tastes.
6. Embracing a world of opulence and savoring the finer moments

Top 3 values of ANY Brand is made up of -

1. **Guiding principles of Operations**
2. **Product Attribute**
3. **How do you look after your customers**

SOPHISTICATION
BRAND VIBE TAKES
CARE OF THEIR
CUSTOMERS WITH :

1. Exquisite
2. Personalized
3. Elegant
4. Refined
5. Attentive
6. Exclusive
7. Seamless
8. Upscale
9. Sophisticated
10. Trustworthy
11. Grace
12. Panache

KNOW YOUR SOPHISTICATION VIBE PERSONIFIED

They are:

1. Refined: They possess refined taste and prefer elegance in every aspect of their lives.
2. Sophisticated: They exude sophistication and have a refined sense of style and manners.
3. Cultured: They appreciate and seek out cultural experiences, such as art, literature, and music.
4. Discerning: They have a discerning eye for quality and can easily recognize superior craftsmanship.
5. Exclusive: They value exclusivity and seek out unique and rare experiences, products, or services.
6. Elegant: They have a natural elegance and grace in their demeanor and choices.
7. Polished: They pay attention to details and strive for perfection in everything they do.
8. Upscale: They gravitate towards high-end and luxury offerings in various aspects of their lives.
9. Intellectual: They have a deep appreciation for knowledge and intellectual pursuits.
10. Well-informed: They stay informed about the latest trends, developments, and advancements in their areas of interest.

Nature of your Vibe

They are:

11. Poised: They maintain composure and grace under pressure, projecting an air of confidence.

12. Meticulous: They pay careful attention to detail and have a meticulous approach to their work and personal life.

13. Aspirational: They are driven to achieve success and strive for excellence in their endeavors.

14. Discreet: They value privacy and prefer to keep their personal and professional lives separate.

15. Classic: They appreciate timeless and enduring styles that transcend trends.

16. Well-traveled: They enjoy exploring the world and immersing themselves in different cultures.

17. Observant: They have a keen eye for observing and appreciating beauty in their surroundings.

18. Reserved: They maintain a certain level of reserve and grace in their interactions with others.

19. High standards: They have high expectations and set high standards for themselves and those around them.

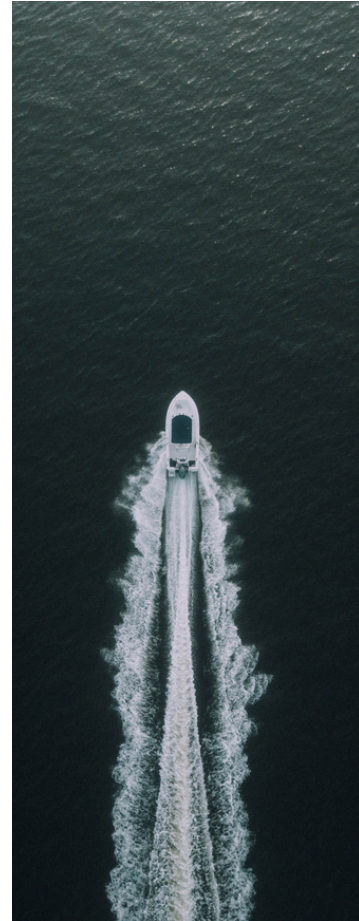
20. Influential: They have a certain level of influence and are admired for their refined tastes and choices.

Storytelling is about evoking emotions

During brand storytelling on social media, ad campaigns, websites, or stakeholder stories, employee narratives, customer testimonials, or the brand's origin tale, each one must elicit emotions that align with the essence of your Brand Archetype & Vibe exclusively, always.

For companies embodying the Sophistication Vibe, it is crucial to evoke emotions of -

- Of elegance and refinement.
- Of exclusivity and privilege.
- Of luxury and indulgence.
- Of confidence and self-assuredness.
- Of sophistication and class.
- Of prestige and distinction.
- Of impeccable taste and style.
- Of opulence and grandeur.
- Of timeless beauty and allure.
- Of aspiration and status.
- Of sophistication and allure.
- Of indulgence and pleasure.
- Of aspiration and status.



know your customers



CUSTOMERS

- High-End Consumers: These customers are willing to pay a premium for luxury products and services. To attract them, your brand should emphasize exclusivity, quality, and sophistication. Use high-quality materials, exceptional craftsmanship, and limited edition designs to appeal to these customers. Showcase your products in upscale locations and through high-end marketing channels.
- Discerning Shoppers: These customers are highly selective and have discerning tastes. To attract them, your brand should offer unique and personalized experiences. Focus on customization and personalization, provide exceptional customer service, and offer exclusive access to limited edition products or collections.
- Cultured Individuals: These customers value art, culture, and refinement. To attract them, your brand should emphasize creativity and artistic expression. Use creative and visually stunning marketing materials, collaborate with artists or designers, and showcase your brand's cultural affiliations.
- Status Seekers: These customers value social status and prestige. To attract them, your brand should emphasize exclusivity, luxury, and social status. Use celebrity endorsements, exclusive events, and other social proof to appeal to these customers. Create a sense of exclusivity through limited edition products or by limiting the availability of your products.

Visual Sensory Brand Experience :

Strategically employs colors, logos, and visual aesthetics in retail and office spaces, ensuring a consistent and memorable brand identity across diverse platforms and touchpoints.

- Retail/Shop/Office Interiors: The interiors should exude elegance and refinement, with clean lines, minimalist decor, and high-quality materials such as marble, polished wood, or brushed metal. Soft lighting fixtures, such as chandeliers or recessed lighting, can create a warm and inviting ambiance.
- Product Aesthetic: Products should feature sleek and sophisticated designs, with attention to detail and craftsmanship. Consider incorporating minimalist packaging with embossed logos or subtle metallic accents for a luxurious touch.

Sensory Experience

Auditory Sensory Brand Experience:

Utilizes sound elements like jingles, music, and specific tones to create a distinctive auditory identity, fostering brand recognition and emotional connections.

- Background Music: Soft, classical music or instrumental jazz can create a sophisticated atmosphere in retail spaces or office environments. For advertisement jingles or social media reels/posts, consider using elegant, orchestral arrangements or smooth jazz tunes to complement the brand's upscale image.

Sensory Experience

Tactile Sensory Brand Experience:

Focuses on touch by integrating textures, quality materials, and interactive interfaces, establishing a physical connection with the brand through products, packaging, and digital interactions.

- **Packaging and Digital Interactions:** Packaging materials should feel luxurious to the touch, with smooth surfaces, matte finishes, or embossed textures. Digital interfaces should prioritize ease of use and responsiveness, with sleek and intuitive designs that convey a sense of sophistication and professionalism.

Sensory Experience

Olfactory Sensory Brand Experience:

Engages the sense of smell with signature scents in branding, products, retail spaces, or packaging, contributing to a unique and memorable olfactory association with the brand.

- **Fragrance:** Infuse the retail space or office environment with a signature scent that evokes sophistication and luxury. Consider using subtle, floral or woody fragrances with hints of citrus or spice to create a refined olfactory experience. Incorporate the same scent into packaging or marketing materials for consistency across touchpoints.

FOLLOWING ARE POSITIONS OF EACH SOPHISTICATION TEMPERAMENT TO CRAFT UNDERLYING FOCAL POINT OF YOUR BRAND POSITIONING -

1. LUXURY:

- a. Unparalleled craftsmanship and attention to detail.
- b. Use of high-quality materials sourced from around the world.
- c. Exquisite and timeless designs that evoke a sense of opulence.
- d. Limited production and exclusivity to maintain a sense of rarity.
- e. Premium pricing justified by the exceptional quality and experience.

2. EXCLUSIVE:

- a. Membership or loyalty programs offering VIP benefits and privileges.
- b. Access to exclusive products, collections, or services not available to the general public.
- c. Invitation-only events and experiences reserved for a select few.
- d. Personalized recommendations and tailored offerings based on individual preferences.
- e. Collaborations with renowned designers or influencers for unique and limited-edition collaborations.

FOLLOWING ARE POSITIONS OF EACH
SOPHISTICATION TEMPERAMENT TO CRAFT
UNDERLYING FOCAL POINT OF YOUR
BRAND POSITIONING -

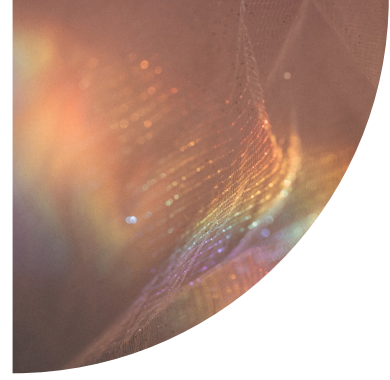
3. ELEGANT:

- a. Clean and sophisticated design aesthetic that exudes grace and refinement.
- b. Attention to minimalist and timeless elements that stand the test of time.
- c. Thoughtful details and subtle embellishments that add a touch of sophistication.
- d. Harmonious color palettes and refined typography choices for visual appeal.
- e. A sense of effortless style that embodies grace and poise.

4. SUPERIOR:

- a. Exceptional product performance and functionality that surpasses competitors.
- b. Cutting-edge technology or innovation that sets the brand apart.
- c. Rigorous quality control processes to ensure only the best products reach customers.
- d. Expertise and knowledge demonstrated by highly skilled professionals.
- e. A commitment to continuous improvement and staying ahead of industry trends.

Elements of Tone



Polished: The tone should be polished and refined, with a focus on attention to detail and quality.

Confident: The brand should exude confidence and a sense of assurance in its messaging.

Authoritative: The tone should be authoritative and knowledgeable, positioning the brand as an expert in its field.

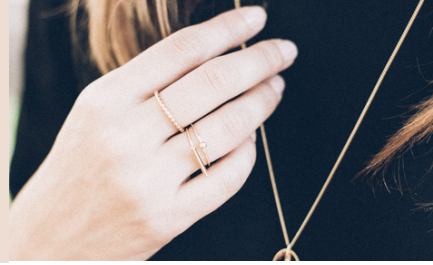
Poised: The tone should be poised and sophisticated, with a focus on elegance and refinement.

Personalized: The tone should be personalized, with messaging that speaks directly to the target audience and their specific needs and preferences.

DON'Ts

- Use inappropriate language: Avoid using inappropriate language or making insensitive comments in external communication, which can damage the company's reputation and offend customers and stakeholders.
- Ignore feedback: Do not ignore feedback from customers and stakeholders or dismiss their concerns, which can lead to a loss of trust and loyalty.
- Overcomplicate messages: Do not overcomplicate messages or use complex jargon, which can confuse customers and stakeholders and undermine the effectiveness of external communication.
- Share confidential information: Do not share confidential information or trade secrets in external communication, which can compromise the company's security.
- Use too much humor: Avoid using too much humor or making jokes in external communication, which can be interpreted as unprofessional and insensitive.
- Forget to follow up: Do not forget to follow up on external communication or fail to address customer and stakeholder concerns, which can lead to a lack of trust and a negative impact on the company's reputation.





A SOPHISTICATION BRAND:



**As unique
as you**

1. Simple and elegant design: Rely on clean and simple design elements, with a focus on minimalism and sophistication. This can include the use of high-quality materials, muted color palettes, and understated typography.
2. Premium packaging: Packaging design is often a key aspect of the visual messaging for sophisticated brands. Premium packaging adds to the overall luxury and exclusivity of your product or service.
3. High-quality imagery: The imagery used in visual messaging for sophisticated brands should be of the highest quality, with a focus on showcasing the product or service in an elegant and refined way. This can include product photography, lifestyle imagery, and visual storytelling.
4. Premium materials: The materials used in visual messaging for sophisticated brands should be of the highest quality, with a focus on luxurious materials that convey a sense of exclusivity and refinement.
5. Attention to detail: Attention to detail is key for sophisticated brands, and this should be reflected in the visual messaging. Every aspect of the design should be carefully considered, from the typography to the color palette to the layout.

For Specific Visuals
MAINTAIN A UNIFIED THEME IE : THE LOOK & FEEL FOR
YOUR BRAND VISUALS.

Look Theme - Based on Avatar of your Brand Archetype

Feel Theme - Based on Temperament of your Brand Vibe

TEMPERAMENTS OF SOPHISTICATION

Elegant-

1. Soft and sophisticated color palettes with pastel or muted tones.
2. Graceful and delicate typography with classic serif or script fonts.
3. Clean and minimalist design with plenty of white space for a polished look.
4. Elegant imagery featuring graceful poses, refined settings, and timeless beauty.
5. Symmetry and balance in design elements to create a sense of harmony and sophistication.

Superior-

1. Bold and confident visuals that convey strength and authority.
2. Striking and powerful color schemes with deep tones and contrasting hues.
3. Strong typography with bold and assertive fonts.
4. Imagery showcasing cutting-edge technology, advanced features, or top-notch performance.
5. High-quality videos or animations that highlight the superior aspects of the product or service.

For Specific Visuals
MAINTAIN A UNIFIED THEME IE : THE LOOK & FEEL FOR
YOUR BRAND VISUALS.

Look Theme - Based on Avatar of your Brand Archetype

Feel Theme - Based on Temperament of your Brand Vibe

TEMPERAMENTS OF SOPHISTICATION

Luxury-

1. Opulent and lavish visuals featuring high-end products and extravagant settings.
2. Sophisticated and refined design elements with a focus on quality and craftsmanship.
3. Rich textures and materials such as velvet, silk, and marble.
4. Images of luxury experiences like spa retreats, private jets, or exclusive events.
5. High-quality and professionally shot photographs that showcase luxury in every detail.

Exclusive-

1. Limited edition or exclusive offers that create a sense of rarity and privilege.
2. VIP or membership programs with special benefits and personalized experiences.
3. Behind-the-scenes content or exclusive sneak peeks that make customers feel like insiders.
4. Elegant and minimalist design with a focus on clean lines and high-quality visuals.
5. High-end packaging and presentation that enhances the feeling of exclusivity.

2.1 Sophistication brand vibe



WWW.THEWEBSITE.COM

MUST COMMUNICATE FEELING OF

1. Visual appeal: The website should have a visually appealing design that reflects the brand's values and vision. This could include the use of high-quality images and videos, a clean and minimalist layout.
2. User experience: The website should provide a seamless user experience that is intuitive and easy to navigate. This could include a clear and concise menu, quick loading times, and a mobile-responsive design.
3. High-quality content: The website should have high-quality content that is well-written, informative, and engaging. This could include product descriptions, blog posts, and customer testimonials.
4. Personalization: The website should provide a personalized experience for each user. This could include personalized product recommendations, customized pricing based on user preferences, and personalized content based on user behavior.
5. Brand messaging: The website should communicate the brand's values and vision in a clear and concise manner. This could include the use of compelling headlines, brand stories, and mission statements.
6. Social proof: The website should include social proof in the form of customer reviews, testimonials, and case studies. This can help build trust and credibility with potential customers.

WEBSITE LAYOUT:

- Design a sleek and sophisticated layout that exudes luxury and elegance.
 - Use a refined and timeless color palette, such as shades of black, white, gold, or muted tones.
 - Incorporate clean lines and minimalistic design elements to create a sense of class and sophistication.
- Ensure a user-friendly and intuitive navigation system that enhances the elegant browsing experience.

CONTENT:

- Craft refined and polished content that reflects the high-class and luxurious nature of your brand.
- Use sophisticated and eloquent language to convey a sense of exclusivity and prestige.
 - Showcase high-quality images or videos that depict luxury, elegance, and superior craftsmanship.
- Emphasize the unique features and premium aspects of your products or services.

OTHER MUST-HAVES:

- Feature an "About Us" page that narrates the story of your brand's journey to sophistication and elegance.
- Include a blog or magazine-style section with insightful and stylish content related to your industry or niche.
 - Integrate social proof elements, such as testimonials from satisfied high-end clients or influencers.
- Provide seamless and personalized customer support that matches the level of class and luxury your brand represents.
- Offer exclusive and limited-time promotions or premium packages to cater to the discerning tastes of your audience.

TYPES OF

UNDER SOPHISTICATION VIBE & WHY THEY ARE EFFECTIVE

Monograms or **lettermarks**: These logos are composed of letters or initials that represent the company's name. They are popular among sophisticated brands because they give a sense of elegance and refinement.

Crests or **shields**: These logos are often associated with tradition, heritage, and prestige. They typically feature a complex design with intricate details, making them perfect for sophisticated brands that value attention to detail and craftsmanship.

Wordmarks: These logos are made up of the company's name in a stylized font or typography. Used by brands that have a strong name recognition and want to emphasize the sophistication & elegance.

Abstract marks: These logos are designed to be unique and memorable, often using abstract shapes or symbols that represent the company's values or mission.

Emblems: Similar to crest or shield logos, emblems typically have a classic or vintage feel, with a symbol or image surrounded by text. Used by brands that want to emphasize their history, heritage, or tradition, and are popular among sophisticated brands that value timeless design



Premium quality:

Emphasize the premium quality of your products or services. Highlight craftsmanship, attention to detail, and superior materials to showcase the sophistication and class associated with your brand.

Elegant packaging:

In vest in elegant and luxurious packaging that reflects the sophistication and class of your brand. Use high-quality materials, minimalist designs, and tasteful branding elements to create an exceptional unboxing experience.

Influencer collaborations:

Collaborate with influencers, tastemakers, or experts known for their sophistication and class. Their association with your brand can enhance its perceived elegance and attract a refined audience.

High-end imagery:

Utilize high-quality, professionally shot visuals that capture the essence of sophistication. Showcase your products or services in elegant settings or on models who embody the refined and classy lifestyle.

Tailored content:

Create content that speaks to the refined interests and tastes of your target audience. Offer expert advice, curated recommendations, or in-depth guides that demonstrate your brand's knowledge and sophistication.

Editorial-style content:

Create content that resembles editorial features found in high-end magazines. Develop articles, blog posts, or videos that offer insightful and in-depth information, catering to the refined interests of your audience.

Fine art collaborations:

Collaborate with artists or art institutions to create limited-edition collections or artistic collaborations. This adds a touch of cultural sophistication and aligns your brand with the world of fine art.

Bespoke experiences:

Offer personalized or custom-made experiences to your customers. Tailor your offerings to their specific preferences, providing a truly sophisticated and exclusive experience.

Subtle luxury cues:

Incorporate subtle luxury cues into your brand materials, such as embossed logos, foil accents, or delicate embellishments. These refined details convey a sense of elegance and elevate the perception of your brand.

Sophisticated event sponsorships:

Sponsor or participate in sophisticated events, such as art exhibitions, charity galas, or fashion shows. These partnerships position your brand alongside other esteemed organizations and contribute to a sense of elegance.

Minimalist product design:

Focus on sleek and minimalist product design that exudes elegance and simplicity. Emphasize clean lines, premium materials, and refined finishes to create a timeless and sophisticated aesthetic.

Artistic brand storytelling:

Incorporate elements of art and creativity into your brand storytelling. Use visually stunning imagery, poetic language, or multimedia presentations that evoke emotions and engage the refined sensibilities of your audience.

Private consultations:

Offer personalized, one-on-one consultations to your customers. This creates an intimate and sophisticated experience where you can provide tailored recommendations and guidance based on their specific needs.

Inspirational thought leadership:

Establish your brand as a thought leader in your industry by sharing insightful and sophisticated content. Publish white papers, industry reports, or opinion pieces that demonstrate your expertise and contribute to the conversation.

Sophisticated scent branding:

Develop a signature scent or fragrance for your brand. The sense of smell is closely tied to emotions and memories, and a sophisticated scent can create a unique and luxurious association with your brand.

Private member clubs:

Create an exclusive membership program or a private club for your loyal customers. Offer special privileges, access to exclusive events, or personalized services that cater to their refined tastes and desires.

Fine craftsmanship showcase:

Highlight the exceptional craftsmanship and attention to detail behind your products or services. Share behind-the-scenes content, artisan stories, or videos that showcase the meticulous process involved in creating your offerings.

Exclusive events:

Host exclusive events, private previews, or invite-only gatherings to create a sense of exclusivity and sophistication around your brand. These events should be meticulously planned and exude an atmosphere of elegance and refinement.

Philanthropic initiatives:

Support and promote philanthropic initiatives or social causes that resonate with your refined audience. Demonstrating a commitment to social responsibility adds depth and sophistication to your brand.

Refined customer service:

Provide exceptional and personalized customer service that reflects the sophistication and class of your brand. Train your staff to be knowledgeable, attentive, and able to anticipate the needs of your refined clientele.

UTILITY AS EMBODIED BY EACH ESSENCE OF THIS VIBE

1. LUXURY:

- Experience unrivaled luxury with our exquisite collection of products.
- Indulge in the ultimate luxury with our premium offerings.
- Elevate your lifestyle with our opulent and luxurious products.
- Discover the epitome of luxury with our meticulously crafted offerings.
- Immerse yourself in a world of luxury with our exclusive range of products.

2. EXCLUSIVE:

- Unlock a world of exclusivity with our limited edition products.
- Access exclusive products tailored to your discerning taste.
- Experience the privilege of owning our exclusive line of offerings.
- Discover a collection of products available only to a select few.
- Join our exclusive community and enjoy access to unique offerings.

Product Description

UTILITY AS EMBODIED BY EACH ESSENCE OF THIS VIBE

3. ELEGANT:

- Embrace elegance with our sophisticated and refined products.
- Discover the beauty of timeless elegance through our offerings.
- Experience the perfect blend of style and grace with our elegant products.
- Immerse yourself in the world of understated elegance with our collection.
- Elevate your aesthetic with our elegantly designed range of products.

4. SUPERIOR:

- Experience the superiority of our products, designed to surpass expectations.
- Choose excellence with our superior quality and craftsmanship.
- Discover the unparalleled performance and superiority of our offerings.
- Elevate your standards with our range of superior products.
- Trust in our commitment to delivering products of the highest superiority.

2.5

Select SUPPORTING SECONDARY COLOURS based on the essence you want to create, in combination with your Dominant color, to create the desired brand aesthetics.

Colours

LUXURY

Gold

Silver

Purple

Blue

Green



#FFD700

#C0C0C0

#4B0082

#4169E1

#008000

EXCLUSIVE

Black

Burgundy

Navy

Gray

Brown



#000000

#800020

#000080

#36454F

#964B00

ELEGANT

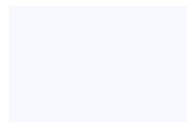
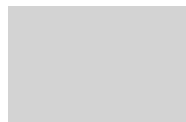
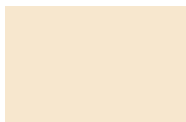
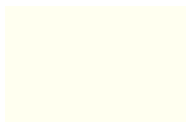
Ivory

Champagne

Pink

Gray

White



#FFFFFF0

#F7E7CE

#FFC0CB

#D3D3D3

#F8F8FF

SUPERIOR

Blue

Green

Maroon

Gray

Brown



#000080

#006400

#800000

#A9A9A9

#654321

USE OF FONTS IN HEADINGS, SUB-HEADINGS & PARAGRAPHS -

Use your Brand Archetype Fonts For **Formal & all Standard** Content/Communication &

Use your Brand Vibe Font For **Informal or all Personal Note** Content/Communication

CHOICE OF FONTS -

The main briefing about your archetype typeface, the styling of fonts & few example fonts are shared herewith - Lock the fonts you want in each Category (Headings, Sub-headings & Paragraphs) based on those pointers & always use the same chosen ones in your internal & external communications including social media posts, replies, PR, advertisement, product description, website, videos etc



Main Brief for the Archetype

1. Large Headings:

- Use bold and commanding fonts that exude authority and confidence.
- Opt for clean and modern typefaces to reflect a sense of sophistication and professionalism.
- Consider using uppercase letters to emphasize the assertiveness and dominance of your brand.

2. Sub Headings:

- Choose fonts that complement the large headings but are slightly less dominant to create a clear visual hierarchy.
- Use variations in weight or style to differentiate subheadings from the main headings.
- Ensure legibility and readability, even at smaller sizes, to maintain a sense of control and order.

3. Paragraphs:

- Select legible and classic fonts for paragraphs to establish a sense of stability and reliability.
- Aim for a balanced font size and line spacing that allows for comfortable reading without overwhelming the reader.
- Consider using serif fonts for a more traditional and authoritative feel, or sans-serif fonts for a modern and streamlined impression.

Style of the Archetype

1. **Serif Fonts:** Consider using serif fonts like Baskerville, Georgia, or Didot. Serif fonts have small lines or flourishes at the end of each character, which gives them a classic and sophisticated appearance.
2. **Thin and Light Weight:** Opt for thin or light-weight font variations to exude an air of delicacy and subtlety. These fonts convey a sense of understated elegance.
3. **Minimalist and Clean:** Choose fonts with clean lines and minimal embellishments to create a modern and polished look, aligning with sophistication.
4. **Classic Elegance:** These fonts have a refined charm that has stood the test of time.
5. **Cursive or Script Fonts:** Consider incorporating cursive or script fonts for a touch of sophistication and personalized flair. These fonts often evoke a sense of luxury and exclusivity.
6. **High Contrast Fonts:** Fonts with high contrast between thick and thin strokes can add a touch of drama and elegance.
7. **Unique Ligatures:** Explore fonts with unique ligatures or special character combinations. These distinctive elements can add an exclusive and luxurious feel to your brand's typography.
8. **Consistency:** While experimenting with various font styles, ensure to maintain consistency throughout your branding materials. Consistency creates a cohesive and sophisticated look that reinforces your brand's identity.

General Examples of the Archetype for references

a. Large Headings:

1. Playfair Display
2. Montserrat
3. Baskerville
4. Abril Fatface
5. Oswald
6. Lora
7. Libre Baskerville
8. Didot

b. Sub-Headings:

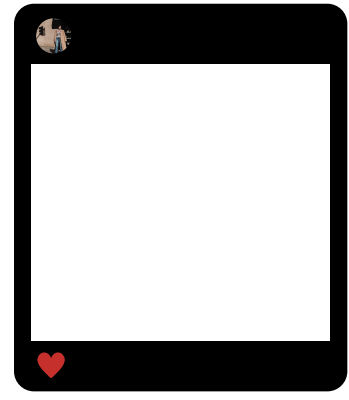
1. Roboto
2. Raleway
3. Merriweather
4. Source Sans Pro
5. Open Sans
6. Quicksand
7. Nunito
8. PT Sans

c. Paragraphs:

1. Arial
2. Times New Roman
3. Georgia
4. Calibri
5. Open Sans
6. Lato
7. PT Serif
8. Noto Serif

Please note this is not a exhaustive list, these are examples based on discussed parameters for your references

Step 1



LIST THE SOLUTION YOUR COMPANY IS PROVIDING

- Solution to the pain of Your ideal customer
- Solution to the dream of Your ideal customer

There would be few very core solutions that your company is offering. Additionally, there'd be other solutions that align with your unique selling proposition, reflecting your brand archetype or vibe.

LIST ALL OF THEM.

Excellent! these will serve as a captivating hook for your social media post. By now, you should have developed approximately 10 to 20 solutions addressing your customers' pains and aspirations, all tailored to resonate with your brand's archetype & vibe ideologies.

Step 2

CREATING YOUR SOCIAL MEDIA POST

Like all storytelling.. every social media posts is divided into three segments.

- **The hook**
- **The body**
- **The end**

That is the beginning, the middle and the end.

STRUCTURE OF YOUR SOCIAL MEDIA POST

THE HOOK

a. Grab your customer's attention by talking about their dream or their pain area in the beginning of the Post
(from previous step)

First or Initial line

THE BODY

b. Talk about the SOLUTION your brand offers targeting that specific 'pain or dream'

Use the undertone of your brand archetype positioning - there will be different avatars of your brand archetype that would specifically play the role of being a solution to the problem specified.

Forming your second main line/para

c. Add extra detailing, to specifically cement your connection with the audience; Make them give you the contract of their loyalty/ their purchase/their engagement/ their add to cart

Use the undertone of your brand vibe positioning - there are different temperaments to play around with. You can switch according to the suitability of the offering or solution.

Forming your third supporting line/para

d. Talk about your USP

This is optional

THE END

d./e. Clearly showcase their pain/desire to transformation into result
Followed by - a Call to Action



Language or Voice: Depending upon the nature of the post, you can choose the what emotion of storytelling that you are applying to this specific post.

With this method you can literally create hundreds of social media content for your brand. The possibilities are endless as you progress to make content combining each element that covers - Frustrations and desires of customers -

This will ensure, You talk about your brand as a solution in so many different forms to the line of issues your customers are facing or serving as a dream maker

This format will also help your customers too. Always see the personality of your brand come through every single time it brings the solution

Each rendezvous with your social media post will bind the brand and the customer in the same vibe (your vibe attracts your tribe)

You will literally be able to free up so much of your time and can be rest assured that your post is getting the message across.

You can give these instruction to your content writer or as a prompt to your AI content generator or use it yourself.

Ensure that the tone or the language that you use to create these posts is within the framework of your brand archetype /brand vibes storytelling emotion.

CAMPAIGNS

to Reinforce your Brand Vibe & Enhance Audience Engagement

THE ELEGANT JOURNEY:

Showcase a series of ad visuals or videos that depict the elegant journey customers embark on when engaging with your brand, promoting sophistication and refinement.

THE LUXURY LEGACY:

Highlight the heritage and legacy of your brand, communicating how it has been synonymous with luxury and sophistication for generations.

SOPHISTICATED INDULGENCES:

Curate a selection of luxurious indulgences that your brand offers, from exquisite treats to pampering experiences, enticing customers with refined taste.

ELEGANCE REDEFINED:

Run an ad campaign that positions your brand as a leader in redefining elegance and setting new standards of class across industries.

THE REFINED CONNECTION:

Highlight how your brand fosters genuine connections with customers, creating a community of like-minded individuals who appreciate sophistication.

THE ART OF REFINEMENT:

Create a series of informative and visually appealing ads that showcase the meticulous craftsmanship and attention to detail behind your products or services.

THE ELEGANT ESCAPE:

Tease a special event or launch that promises an elegant escape from the ordinary, enticing your audience with a sense of luxury.

LUXURY LIFESTYLE INFLUENCERS:

Run an influencer marketing campaign, partnering with influential individuals who embody sophistication and elegance, promoting your brand's refined identity.

EMBRACE ELEGANT INDULGENCE:

Invite your audience to embrace elegant indulgence with your brand, emphasizing the pleasure of refined experiences.

A TOUCH OF CLASS:

Communicate how your brand adds a touch of class and sophistication to every product or service, making them stand out in the market.

EMBODIMENT OF LUXURY:

Create a campaign that celebrates the embodiment of luxury and sophistication in everyday life, using real-life stories and experiences.

TIMELESS ELEGANCE UNVEILED:

Unveil a campaign that presents your brand as a pioneer in pushing the boundaries of elegance, going above and beyond expectations.

ELEGANT MOMENTS:

Create a series of ads that capture elegant moments with your brand, evoking emotions of luxury and refinement.

SOPHISTICATION WITH PURPOSE:

Position your brand as one that not only offers sophisticated products and experiences but also contributes to a greater purpose or cause, resonating with socially conscious consumers.

THE REFINED VISIONARIES:

Feature visionary individuals or celebrities who embody sophistication and elegance, aligning them with your brand's refined identity.

Embody
your
Sophistication
Energy

In Product
Building

& in
Campaign
Building

Exclusivity: The USP of companies with a "Sophistication" brand vibe should emphasize exclusivity and rarity. Customers should feel that they are getting something that cannot be found elsewhere, whether it is a limited edition product, a personalized service, or an exclusive membership program.

High-quality materials: Emphasize the use of high-quality materials, such as premium fabrics, precious metals, and gemstones. Customers should feel that they are getting a product or service that is truly luxurious and refined.

Expertise and knowledge: Emphasize expertise and knowledge in your industry. Customers should feel that they are receiving expert guidance and advice from knowledgeable professionals who are passionate about their products and services.

Personalization: Emphasize the importance of personalization. Customers should feel that they are receiving a product or service that has been customized to their specific needs and preferences.

Attention to detail: Emphasize the importance of attention to detail. Customers should feel that every aspect of the product or service has been carefully considered and designed to reflect the brand's values and vision.

Innovative design: Emphasize their innovative and creative design. Customers should feel that they are getting a product or service that is unique and original, and that reflects the brand's values and vision.

A) WHEN COMMUNICATING WITH THE TEAM AND EMPLOYEES:

1. Maintain a professional and polished tone: Emphasize the importance of professionalism and attention to detail in all internal communications.
2. Foster a culture of excellence: Encourage a high standard of performance and an atmosphere that promotes continuous learning and growth.
3. Provide clear and concise communication: Ensure that instructions, feedback, and updates are communicated clearly to avoid misunderstandings and promote efficiency.
4. Recognize and appreciate achievements: Celebrate individual and team accomplishments to boost morale and reinforce a culture of excellence.
5. Encourage open and respectful dialogue: Foster an environment where team members feel comfortable expressing their ideas and opinions, promoting collaboration and innovation.

B) WHEN COMMUNICATING WITH LEADERSHIP:

1. Demonstrate expertise and competence:
Clearly convey the company's achievements, strategies, and plans to instill confidence in the leadership team.
2. Provide comprehensive and accurate reports:
Share detailed and well-structured reports that highlight the company's performance, challenges, and opportunities.
3. Align with the company's vision and goals:
Ensure that all communications with leadership reflect the overarching vision and goals of the organization.
4. Communicate with transparency and honesty:
Maintain open and honest communication to build trust and foster a strong working relationship with the leadership team.
5. Offer strategic insights and recommendations:
Provide valuable insights and recommendations that align with the company's sophisticated brand image and contribute to its growth and success.

C) WHEN COMMUNICATING WITH INVESTORS:

1. Highlight financial performance: Clearly communicate the company's financial performance and growth potential, showcasing the strength and stability of the organization.
2. Showcase long-term vision and strategy: Articulate a clear and compelling vision for the company's future and outline the strategic initiatives to achieve it.
3. Communicate risk management strategies: Address potential risks and challenges proactively and present well-thought-out risk management strategies to mitigate those risks.
4. Provide regular updates: Keep investors informed about important developments, milestones, and achievements, providing transparency and building trust.
5. Engage in effective investor relations: Foster strong relationships with investors by providing timely responses to inquiries, hosting investor meetings, and organizing investor events to maintain their confidence and support.

A) WHEN COMMUNICATING WITH CUSTOMERS:

1. Provide personalized and attentive service: Show genuine care for customers' needs and provide a personalized experience that exceeds their expectations.
2. Use sophisticated and polished language: Communicate in a refined and professional manner, using language that reflects the brand's sophistication and elegance.
3. Emphasize quality and craftsmanship: Highlight the superior quality and craftsmanship of products or services to appeal to customers seeking sophistication and exclusivity.
4. Offer exclusive privileges and experiences: Provide special offers, exclusive access, and VIP experiences to create a sense of exclusivity and make customers feel valued.
5. Maintain a strong brand image: Consistently portray a sophisticated and elegant brand image across all customer touchpoints, from packaging and marketing materials to online presence.

B) WHEN COMMUNICATING WITH SUPPLIERS AND VENDORS:

1. Establish strong partnerships based on trust: Build strong relationships with suppliers and vendors by demonstrating reliability, integrity, and professionalism.
2. Communicate clear expectations: Clearly communicate requirements, specifications, and timelines to ensure smooth collaboration and maintain high standards of quality.
3. Recognize and appreciate their contribution: Acknowledge the importance of suppliers and vendors in delivering exceptional products or services and express gratitude for their efforts.
4. Foster open and transparent communication: Maintain open lines of communication to address any issues promptly and foster a collaborative and cooperative working relationship.
5. Seek opportunities for mutual growth: Explore ways to mutually benefit from the partnership, such as sharing market insights, collaborating on new product development, or expanding into new markets.

C) WHEN COMMUNICATING WITH COLLABORATORS AND PARTNERS:

1. Align goals and values: Seek collaborators and partners whose values align with the brand's sophistication and elegance, ensuring a harmonious and mutually beneficial relationship.
2. Communicate shared vision and objectives: Clearly articulate the shared vision and objectives of the collaboration to ensure alignment and foster a sense of purpose.
3. Foster effective communication and collaboration: Establish channels for regular communication and collaboration, ensuring that all parties are well-informed and actively involved in decision-making processes.
4. Emphasize mutual support and growth: Actively support and promote the success of collaborators and partners, recognizing that their achievements contribute to the overall success of the brand.
5. Maintain a professional and respectful approach: Conduct all interactions with collaborators and partners in a professional and respectful manner, valuing their expertise and contributions.

D) WHEN COMMUNICATING WITH OUTSIDE STAKEHOLDERS:

1. Maintain a positive brand image: Ensure that all external communications align with the brand's sophisticated and superior image, reflecting professionalism and attention to detail.
2. Provide transparent and accurate information: Share relevant and accurate information about the brand's performance, initiatives, and impact to build trust and credibility with external stakeholders.
3. Engage in community involvement and social responsibility: Demonstrate a commitment to social responsibility and community involvement, showcasing the brand's dedication to making a positive impact.
4. Seek opportunities for strategic alliances: Identify opportunities to collaborate with external stakeholders on initiatives that align with the brand's sophistication and enhance its reputation.
5. Listen and respond to feedback: Actively listen to feedback from external stakeholders and respond in a timely and respectful manner, showing that their input is valued and considered.

The Brand Domination Journal is designed as your trusted resource to equip you with the tools to make your brand stand out in a competitive market & be your compass in your Brand Domination Journey :

- Use this to Strategize your entire brand across the lifetime of your product/service
- Use in conjunction with your Brand Archetype Manual while formulating all brand emotional & functional components
 - Include all team members so as to maintain authenticity & cohesiveness in your branding
- Revisit as a ready reference from time to time during practical implementation of your new feature development, social media, website/app growth, public relations etc
- Copyright © 2024 BrandBusinessBoundless. All rights reserved.
This digital product, including its contents, design, and associated materials, is protected by copyright laws & may not be reproduced, distributed, or transmitted in any form or by any means.

We are rooting for you every step of the way. With this brand guide, we believe you will be able to strategically position your brand, communicate your unique value proposition, and connect with your audience in a meaningful way. From crafting compelling brand stories to implementing consistent messaging across various touchpoints, we are confident that your brand will leave a lasting impression and make a mark in the hearts and minds of your customers.

We are excited to see your brand thrive and wish you all the success in your brand journey!

- BrandBusinessBoundless.com